

Flourishing 5,000! Celebrating the First Five Thousand Publications Supported by the Georgia CTSA

Nikki Llewellyn, PhD¹, Gaurav Rajgopal, MPH¹, Amanda Abraham, PhD², Emma Bicego, DrPH³, Amy Stehlik¹ & Eric J. Nehl, PhD¹

Evaluation & Continuous Improvement and Communications

¹Emory University, ²University of Georgia, ³Morehouse School of Medicine

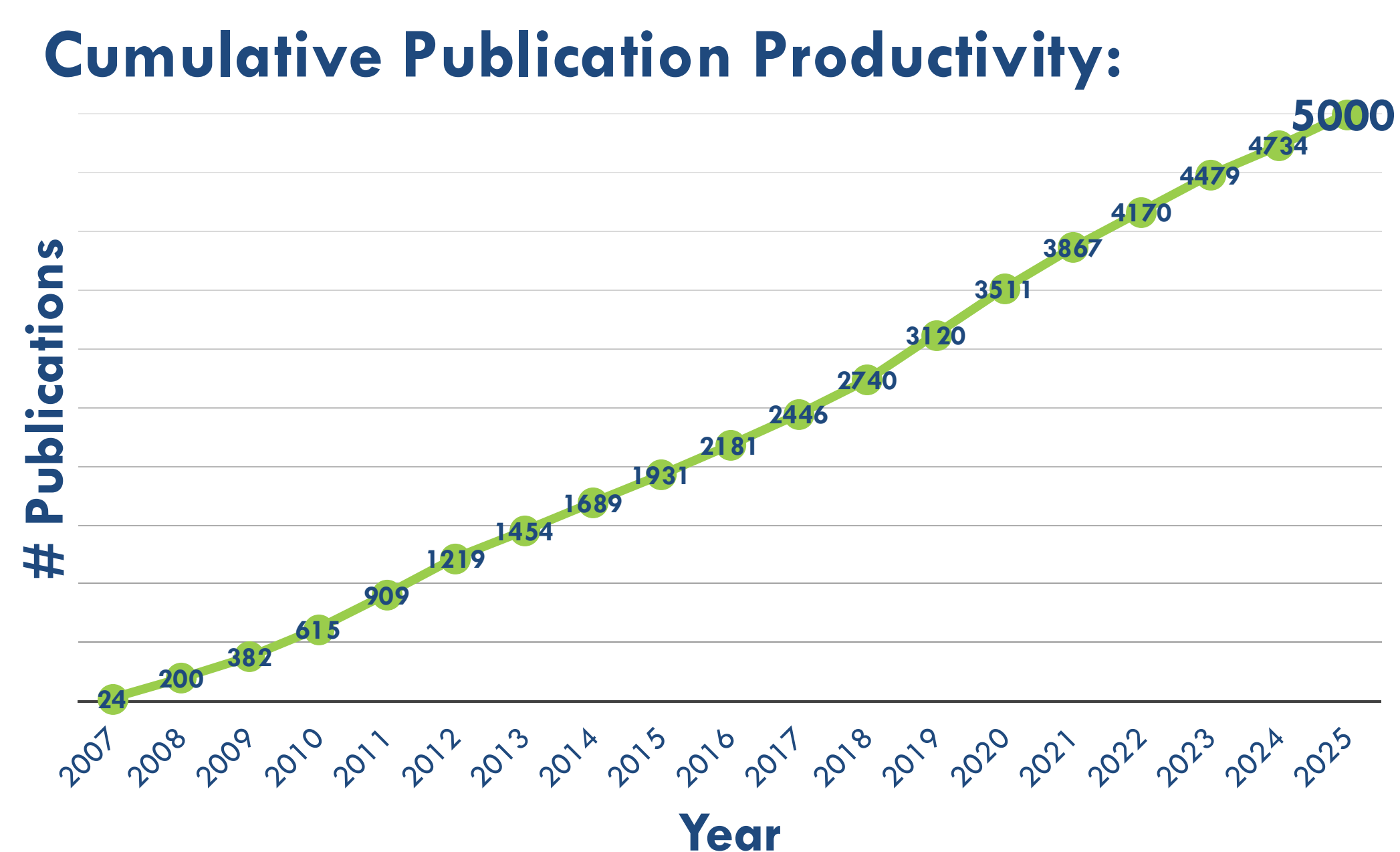
BACKGROUND

- Since 2007, the Georgia CTSA has **supported clinical & translational research** in GA through:
 - research resources
 - expert assistance
 - community engagement
 - training
 - funding
- In 2025, the number of publications resulting from support **crossed the 5K mark**
- This evaluation celebrates this milestone by **showcasing the impact** of this research portfolio across different areas of translation

PROCESS

- Using *PubMed* and *Dimensions*, we tracked publications and bibliometric impact indicators from 2007 to 2025, including:
 - Productivity over time
 - Research areas in Web of Science
 - Cross-institutional collaboration
 - Quantity and quality of influence across academic and public spheres
 - Examples of research 'influencers'

FINDINGS

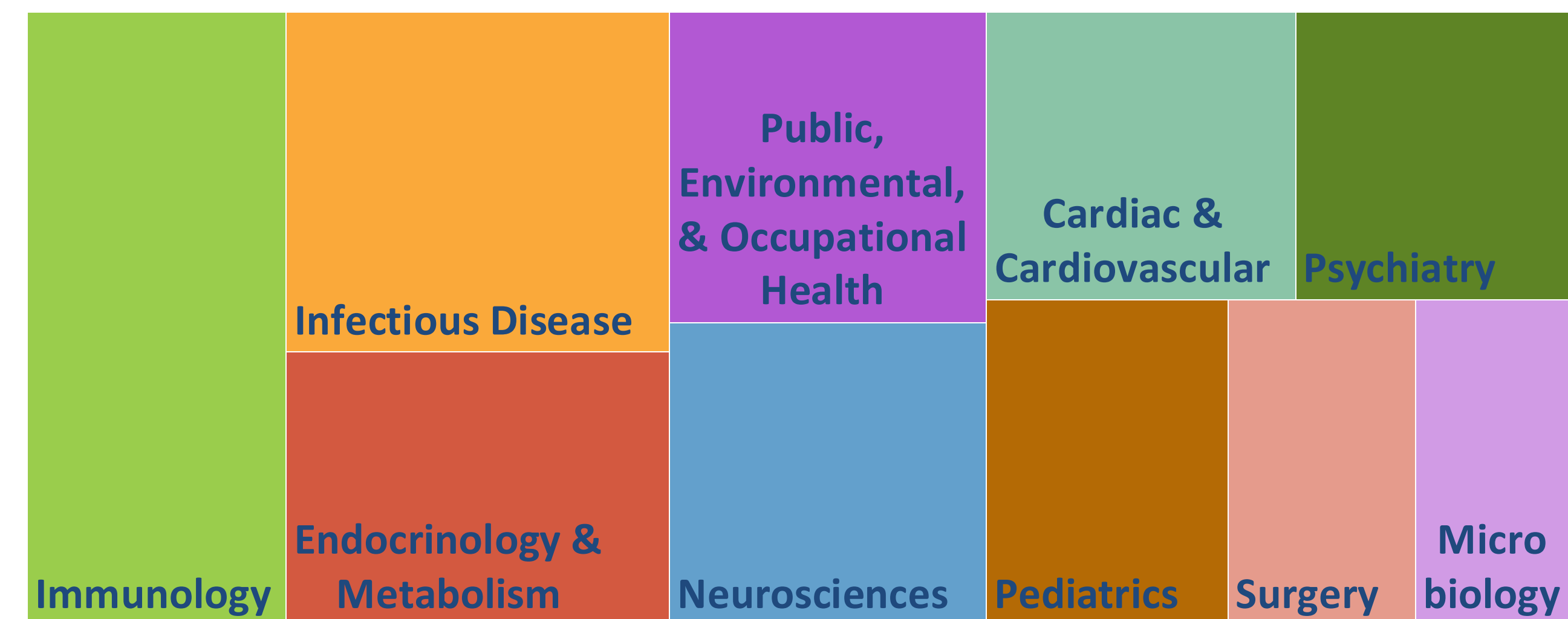


FINDINGS

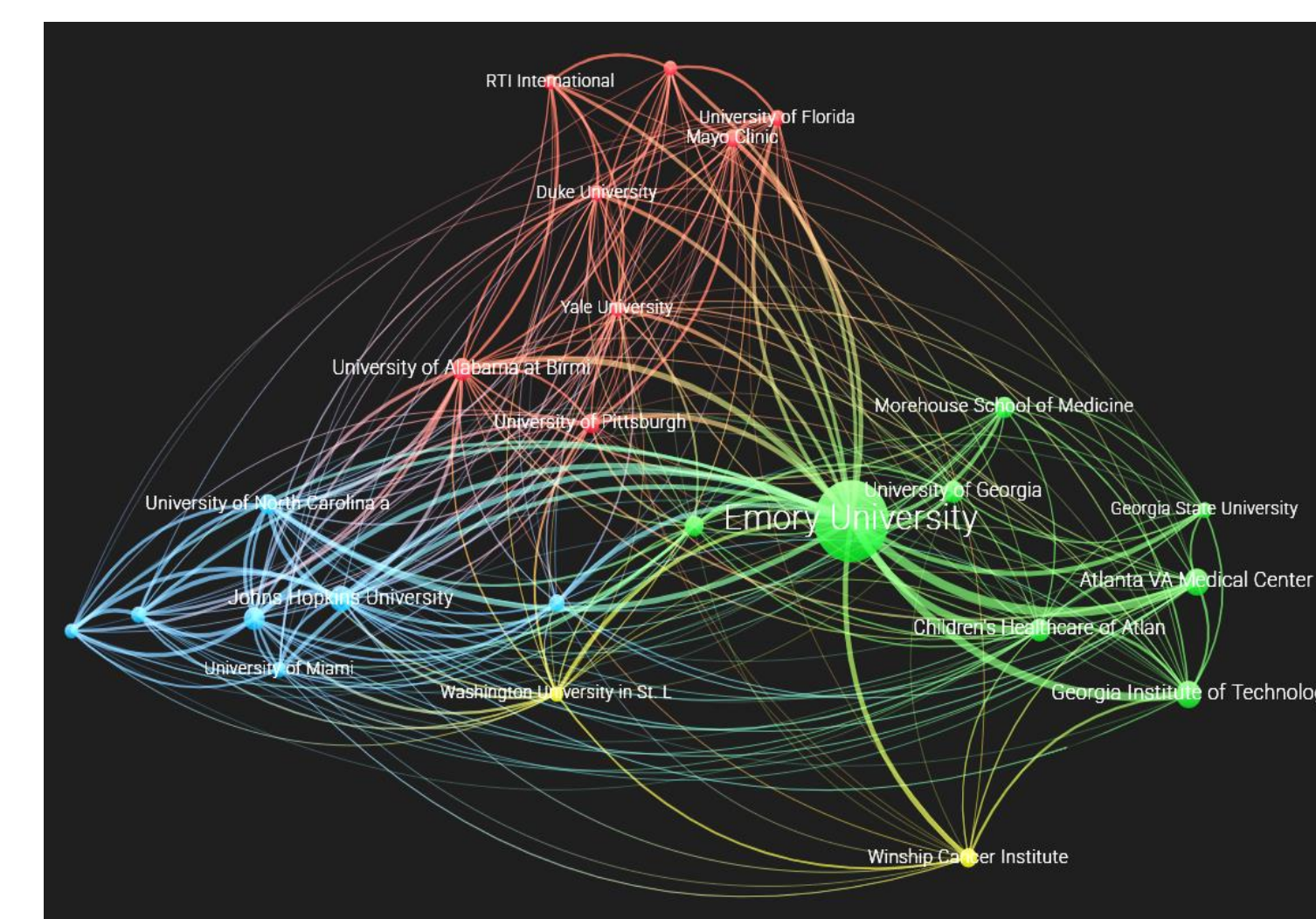
Research Areas: Publications addressed diverse clinical/translational topics, including areas of strong public interest

- 172 publications on *COVID-19* (55 N3C) & 17 on *Ebola*
- 44 publications on *rural health* & 27 on *opioids*
- 77 publications on *maternal health*

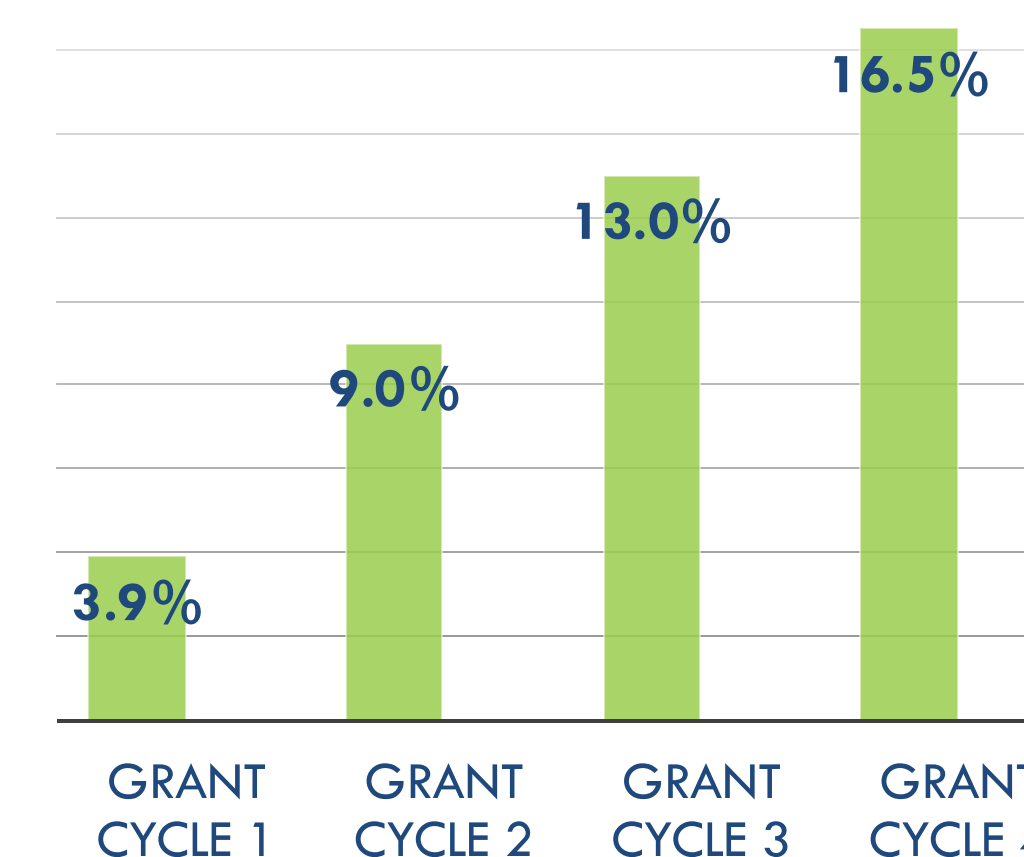
TOP 10 RESEARCH AREAS



Collaboration: Authors collaborated across thousands of institutions, with increasing co-authorship within our hub



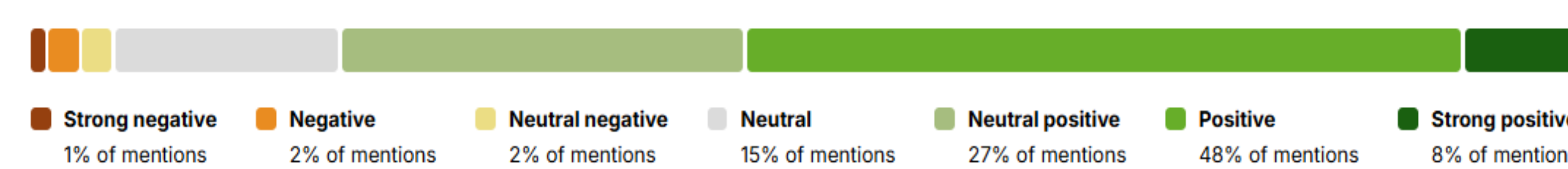
Co-Authorship Across Georgia CTSA Institutions



Influence: 250K academic citations- more than twice the expected rate- & 100K Altmetric mentions- overwhelmingly positive

Mean Relative Citation Ratio = 2.4

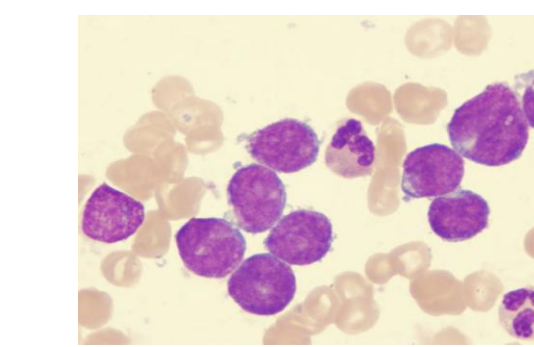
Mean Altmetric Attention Score = 33.3



FINDINGS

Example Influencer Articles:

- Pediatric cancer immunotherapy:** 'Tisagenlecleucel in Children and Young Adults with B-Cell Lymphoblastic Leukemia', 2018
 - Co-author Muna Qayed, MD; Emory KL2 scholar, MSCR, & Pilot grantee
 - Long-term ripple effects:* Over 4,000 academic citations, 300 Altmetric mentions & 50 patent applications



The NEW ENGLAND JOURNAL of MEDICINE



- Reducing allergic reactions:** 'Omalizumab for the Treatment of Multiple Food Allergies', 2024
 - Co-author Brian Vickery, MD; Emory & Children's, received PRU support
 - Splashes & Ripples:* Over 200 News stories, 500 X posts & 250 academic citations



- Drinking and Cognition:** 'Association of Low to Moderate Alcohol Drinking With Cognitive Functions From Middle to Older Age Among US Adults', 2020
 - Co-author Changwei Li, MD, PhD; UGA, Pilot grantee
 - Splashes & Ripples:* Over 150 News stories, 400 X posts, & 150 academic citations

RCR = 7.5



JAMA Network Open @JAMANetworkOpen

25,533 FOLLOWERS

Association of Low to Moderate Alcohol Drinking With Cognitive Functions in US Adults <https://t.co/un10RFSz9n> #MostRead



IMPLICATIONS

- Findings emphasize the **translational progress** that has been accelerated with the support of the Georgia CTSA
- Examples of both early and recent research among a flourishing portfolio of **5,000 publications** illustrate how the Georgia CTSA has contributed to translational advancement over the past 17 years

CONTACT: Nicole.Llewellyn@emory.edu Associate Director, Evaluation & Continuous Improvement

Supported by the National Center for Advancing Translational Sciences of the National Institutes of Health under Award Number UL1TR002378. The content is solely the responsibility of the authors and does not necessarily represent the official views of the National Institutes of Health.